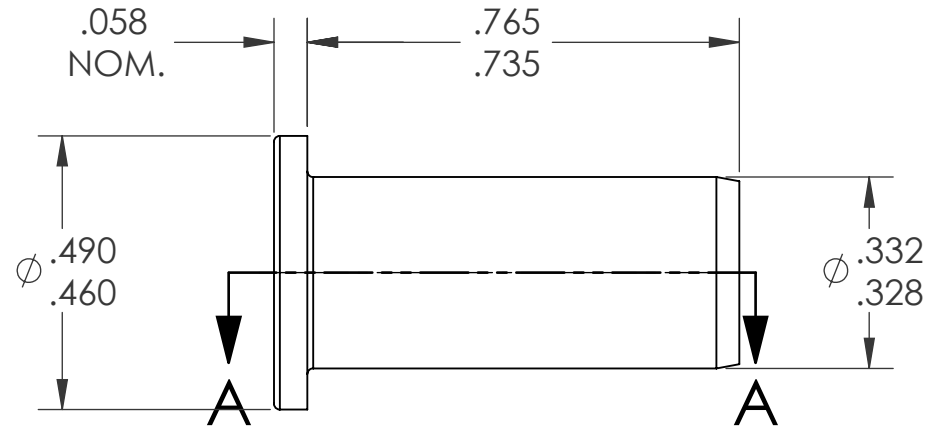
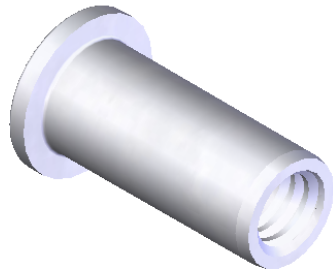
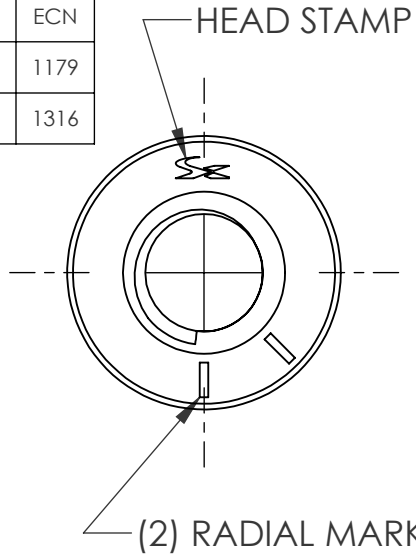
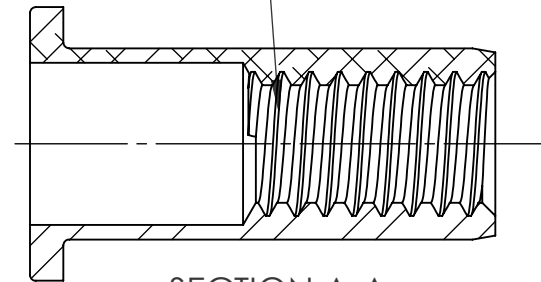


REVISIONS			
REV.	DESCRIPTION	DATE	ECN
A	INITIAL RELEASE	5/8/09	1179
B	UPDATE TO CURRENT FORMAT	6/3/10	1316



1/4-20 UNC 2B (NOTE 6)
PER ASME B1.1
MINOR DIA.: .196 - .207




SECTION A-A
SCALE 3 : 1

NOTE:

- GRIP RANGE: .140 - .200
- HOLE SIZE: .332 +.006/-.000 AFTER ALL APPLIED FINISHES.
- INSTALLED LENGTH: .450 REF.
- LUBRICATION: NONE
- INSTALLATION TOOL: SPIN-PULL
- MAY BE PRODUCED TO 3B THREAD CLASS DEPENDING ON THE MANUFACTURING LOT NUMBER OR CUSTOMER REQUIREMENT. SPECIFIC CLASS AVAILABLE UPON REQUEST.

PROPRIETARY AND CONFIDENTIAL

THIS DRAWING, AND THE INFORMATION CONTAINED HEREIN, ARE THE PROPERTY OF SHEREX AND ARE NOT TO BE USED IN ANY MANNER DETRIMENTAL TO THE INTEREST OF THE COMPANY.
SHEREX SOLUTIONS RESERVES THE RIGHT TO REVISE PART/DRAWING WITHOUT NOTICE.

		UNLESS OTHERWISE SPECIFIED:	NAME	DATE		
		DIMENSIONS ARE IN INCHES TOLERANCES: ANGULAR: MACH ±1 BEND ±1 TWO PLACE DECIMAL ±.01 THREE PLACE DECIMAL ±.002	DRAWN	TWR		5/8/09
		INTERPRET GEOMETRIC TOLERANCING PER: ASME Y14.5M-1994	CHECKED			
		MATERIAL	ENG APPR.	JVK		5/8/09
		A5056/A6053-T4	MFG APPR.			
		FINISH	Q.A.	JVK	5/8/09	
		NONE	COMMENTS:			
		NEXT ASSY	E-mail: info@sherex.com			
		USED ON	www.sherex.com			
		APPLICATION	Phone: 866-474-3739			
		DO NOT SCALE DRAWING	Fax: 716-875-0358			
			TITLE:			
			FLAT HEAD OPEN END			
			SIZE DWG. NO.	REV		
			A CA-2520A-200	B		
			SCALE: 2:1	WEIGHT: kg	SHEET 1 OF 1	